

URW-376

(2.9t x 2.5m)

- Total width 1.3m
- Max working radius 14.45m
- Diesel powered and optional mains electric
- Zero length increase with electric option
- Operator control of outrigger extension
- Intelligent voice warning system
- Radio remote control as standard
- Working area limitation (optional)
- Variable footprint (optional)
- Intelligent throttle activation for economy and ecology



Standard safe load indicator



Optional Variable Footprint safe load indicator

Max. boom length: 14.61m

Capacity 2.9t x 2.5m

Max. lifting height 14.9m

Weight 3850 - 4000kg

Optional fly jib & searcher hook

Capacity	700kg (max)
Length	2017mm
Weight	50kg
Tilt angles	0°, 20°, 40°, 60°

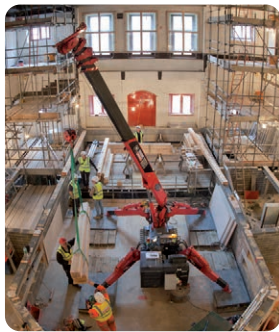
Standard radio remote control



Optional radio remote control with digital feedback

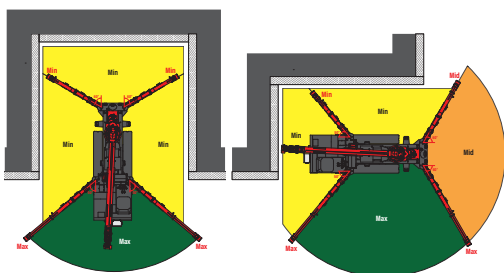


The URW-376 UNIC mini crane features a six-section hydraulic boom to allow a maximum working radius of 14.45m.



This mid-capacity spider crane can be controlled either from the onboard operators seat or from a distance using a radio remote control, or optional radio remote control with digital feedback.

OPTIONAL VARIABLE FOOTPRINT INCLUDING SLEW & HEIGHT LIMITATION

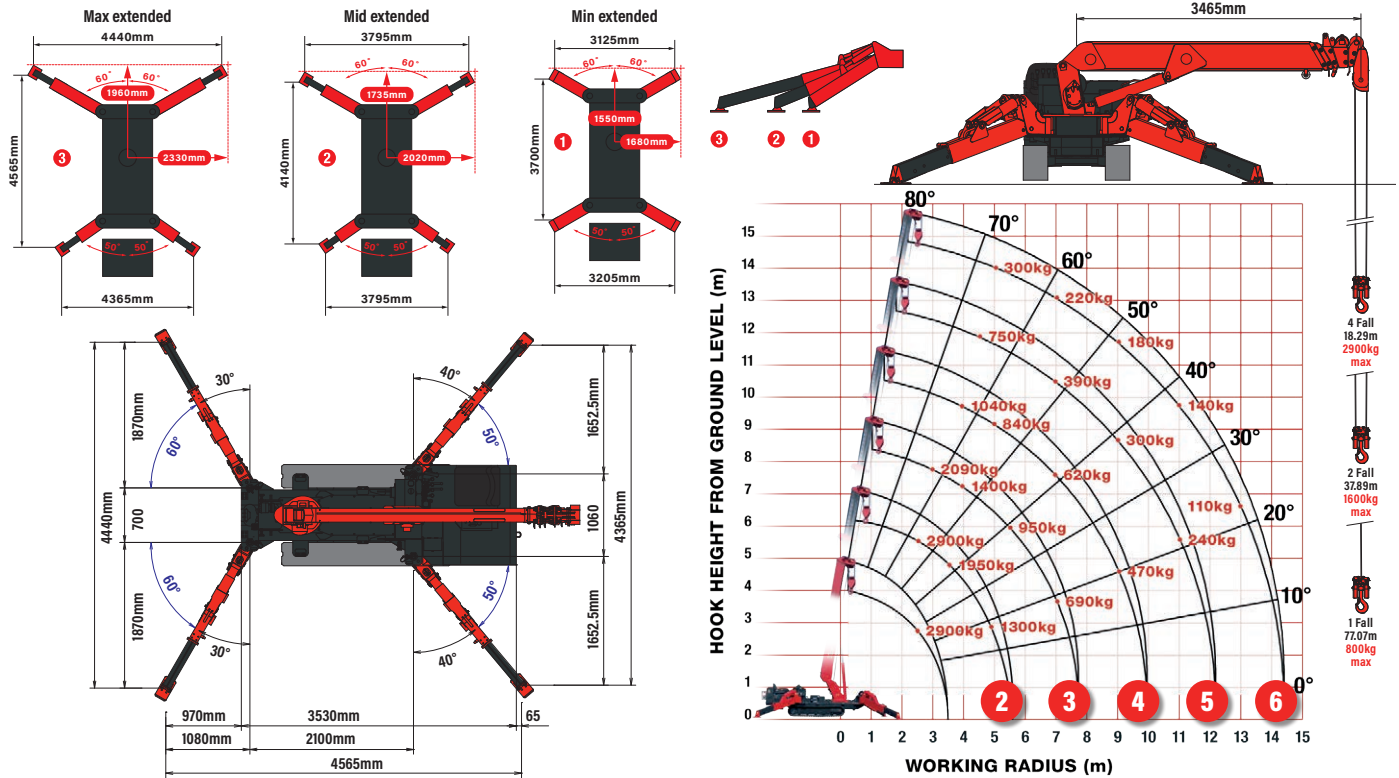


CRANE SPECIFICATIONS

Crane capacity	capacity:	2.9t x 2.5m
Max working radius	max:	14.45m
Max lifting height	approx:	14.9m (16.63m with fly jib, 17.33m with fixed hook)
Rope length	max:	18.29m (4 fall), 37.89m (2 fall), 77.07m (1 fall)
Dimensions	folded:	4340mm (l) x 1300mm (w) x 1800mm (h)
Weight	unladen:	3850kg (4000kg with electric option)
Point loadings	Due to the many variables involved, point loadings are only available on request	
Hook speed	approx:	17m/min (with 4 layers and 4 falls)
Telescopic system	boom length:	3.63 - 14.61m
	telescoping speed:	10.98m/23 seconds
	boom type:	6 section hydraulically telescoping boom, hexagonal box construction
Derricking angle/speed	approx:	0 - 80°/10 seconds
Slewing angle/speed	approx:	360° (continuous) 2.5 min rpm
Traction system	drive:	hydrostatic 2-speed, stepless forward and reverse
	travel speed:	0-3 km/h
	gradeability:	± 20° (vertical), 20° (traverse)
	track ground length:	1750mm
	track ground pressure:	36kPa (0.37kg/cm ²)
	track width:	300mm
Engine	manufacturer:	Mitsubishi / Yanmar
	fuel:	diesel (electric dual power option)
	maximum output:	18kW (24.5PS) / 2100min rpm
	starting method:	electric
	tank capacity:	40 litres
Electric motor	power:	75KW
	voltage:	400v AC 50/60Hz
Standard equipment	computer controlled moment limiter (safe load indicator), radio remote control, overwinding alarm, computer controlled intelligent voice warning system, multi-function operation by radio remote control, intelligent throttle activation, automatic hook stow, overload warning alarms, overload warning lamps	
Optional equipment	1 fall hook block, 2 fall hook block, mains electric dual power (400v), low marking tracks, slew limitation, searcher hook small 500kg, searcher hook 700kg, fly jib 700kg with single part line, radio remote control with feedback display, data logging, forward facing camera, variable footprint option, working area limitation	

MINI SPIDER CRANE

MAIN BOOM RATED LOADS WITH OUTRIGGERS SET TO MAX & OUTRIGGER POSITIONS



SECOND STAGE EXTENDED 3.63 - 5.85 m BOOM LENGTH

Working radius	m	up to 2.0	2.5	3.0	3.5	4.0	4.5	5.0	5.69	
Outrigger	Max-extended	kg	2900	2900	2350	1950	1670	1450	1300	1070
	Mid-extended	kg	2900	2900	2320	1920	1570	1250	990	770
	Min-extended	kg	2900	2900	2170	1500	1120	900	720	470

THIRD STAGE EXTENDED 5.85 - 8.04 m BOOM LENGTH

Working radius	m	up to 2.7	3.0	3.5	4.0	4.5	5.0	5.5	6.0	7.0	7.88	
Outrigger	Max-extended	kg	2240	2090	1650	1400	1220	1070	950	840	690	590
	Mid-extended	kg	2240	2060	1650	1390	1170	1000	820	640	450	370
	Min-extended	kg	2240	2060	1570	1220	1020	830	650	510	300	190

FOURTH STAGE EXTENDED 8.04 - 10.23 m BOOM LENGTH

Working radius	m	up to 4.0	4.5	5.0	6.0	7.0	8.0	9.0	10.07	
Outrigger	Max-extended	kg	1040	930	840	730	620	520	470	380
	Mid-extended	kg	1030	920	830	670	500	380	280	200
	Min-extended	kg	1030	820	640	470	310	220	130	90

FIFTH STAGE EXTENDED 10.23 - 12.42 m BOOM LENGTH

Working radius	m	up to 4.5	5.0	6.0	7.0	8.0	9.0	10.0	11.0	12.26	
Outrigger	Max-extended	kg	750	620	480	390	340	300	270	240	230
	Mid-extended	kg	750	620	470	390	320	270	220	170	130
	Min-extended	kg	750	620	400	250	180	130	90	60	10

SIXTH STAGE EXTENDED 12.42 - 14.61 m BOOM LENGTH

Working radius	m	up to 4.9	5.5	6.0	7.0	8.0	9.0	10.0	11.0	12.0	13.0	14.45
Outrigger	Max-extended	kg	300	270	250	220	200	180	160	140	130	100
	Mid-extended	kg	300	270	250	220	200	180	160	120	90	60
	Min-extended	kg	300	270	250	220	170	110	80	50	30	20

SEARCHER HOOK SMALL - 500kg



Stowed Position



In operation

Lifting capacity 500kg sections 1-5

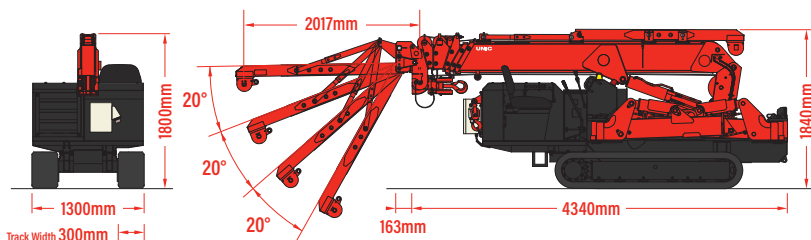
280kg section 6

Length 800mm

Weight 20kg

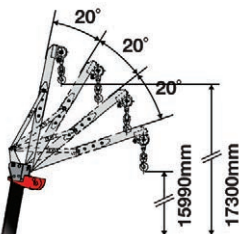
Tilt angles 0°, 20°, 40°, 60°

DIMENSIONS



SEARCHER HOOK

Maximum Load 700kg (radius rated)



FLY JIB

Maximum Load 700kg (angle rated)

